

#firvše

Welcome to FIR
for students from students



Student PR team



Eliška

International
Business



Bc. Adél

International
Business



Bc. Míša

International
Business



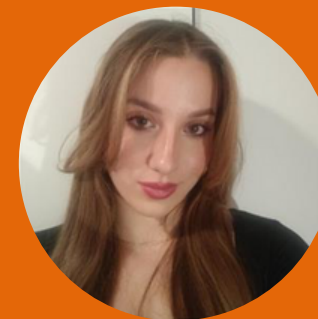
Bc. Ráchel

International
Business



Míša

IBB



Sára

International
Business



Bc. Kika

International
Business



Ondra

International
Business



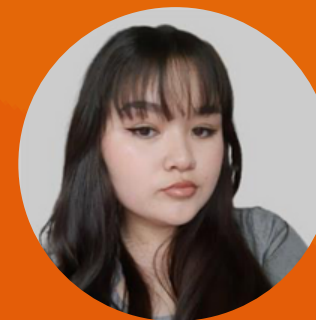
Vanda

International
Diplomatic studies



Nicole

International
Business



Natka

International
Business

VŠE and FIR

#firvše



Faculty of Finance
and Accounting



**Faculty of International
Relations**



Faculty of Business
Administration



Faculty of Informatics
and Statistic



Faculty of
Economics



Faculty of
Management

- More than 13 000 students
- Partner universities (more than 250) - important for study abroad
- 2 campuses (Žižkov and Jižní Město)

FIR management

Meet the
faculty
management
#firvše



doc. Ing. Martina Jiráňková, Ph.D.
Dean

doc. Ing. Josef Taušer, Ph.D.
Vice-Dean for International
Relations and Finance



doc. Ing. Mgr. Radka Druláková, Ph.D.
Vice-Dean for Research
and Doctoral Studies

Ing. Ondřej Sankot, Ph.D.
Vice-Dean for Education
and Development

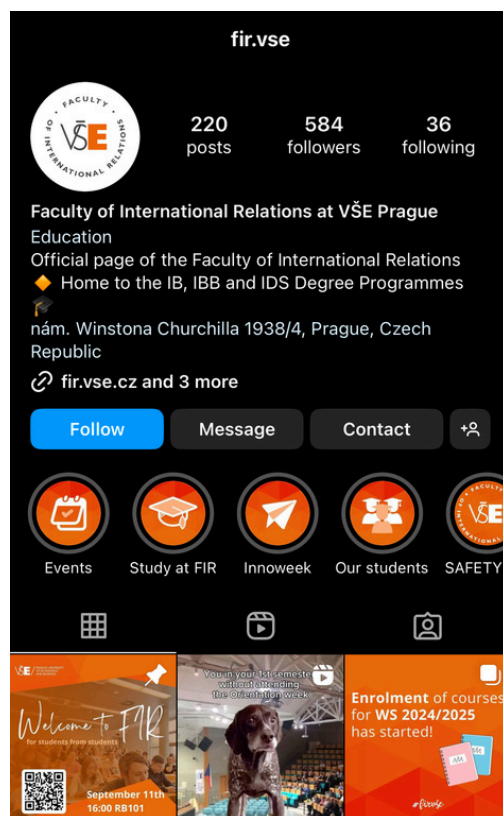


Ing. Andrea Černá
Financial Manager

FIR socials



@fir.vse



Events at FIR

Organised by the PR team:

- FIR Pub Quiz
- Pub games evening
- Welcome to FIR

For all faculties:

- Job Fair Šance
- VŠE Ball
- University Hockey battle



STUDYING AT FIR (TIPS)

#firvše

- B: 180 credits + 36 reserve
- M: 120 credits + 24 reserve

Courses

- oP = compulsory courses (in study guide)
- oV and oV2 = electives - list of courses
- oJP = language courses

Course registration:

- from the second semester
- tips: fill out course review forms, have good grade average, ask about teachers

Studying at FIR

- 60% to pass - 59 points = 4+ = final exam repeat
- Lectures vs Seminars
- Challenging courses: Quantitative Methods (Statistics in the past), Accounting I, Calculus, Geography, **Doing Business in Globalized Environment, International Business Operations**
- Tips: Skills4Study (in some classes), notes don't always match the presentation, office hours

Semester

- 13 weeks + 6 weeks examination period
- Midterms: 5th -8th week usually
- Finals: last week of semester + exam. period

Innovation week:

- Mid-semester (8th week this year)
- No classes (BUT usually midterms, project review, other activities)

Living in Prague

- Public transport (ISIC card = 1 280 Kč)
 - Bus 135 & 101, Trams (subject to change), Metro C
- Student discounts (ISIC card)
 - Student menu items or % discount

Scholarships

- Merit scholarship = below 1,2 average, 2 semesters
- Extraordinary scholarship = one time
- Accommodation scholarship = payed retrospectively



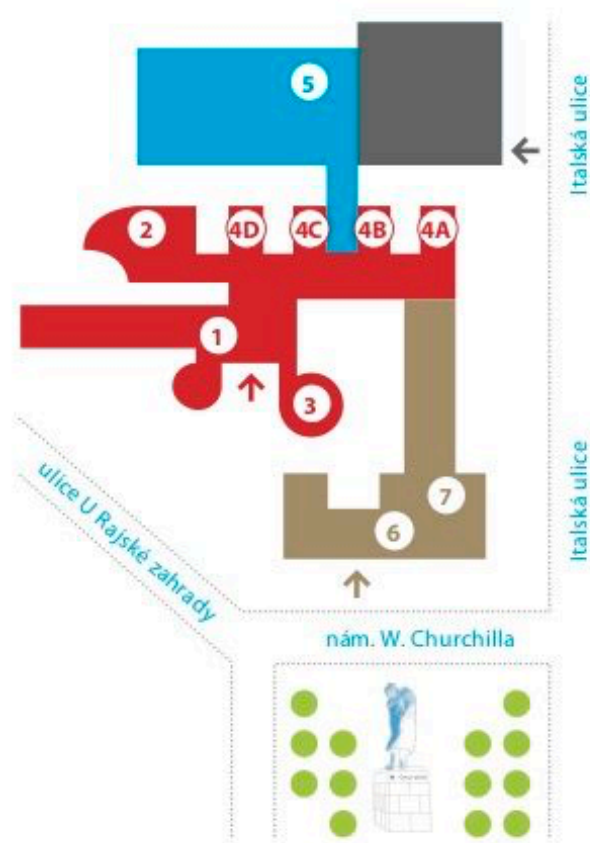
All scholarships are payed in CZK - need to have Czech bank account

VŠE CAMPUS

#firvše

The campus

- Old Building (SB) – in Czech: Stará budova
- New Building (NB) – in Czech: Nová budova
- Rajská Building (RB)
- Italská Building (IB)



NB	NEW BUILDING
GROUND FLOOR: 1 Information Centre 2 Vencovského Auditorium 3 Likesova Auditorium 4 Lecture Halls A, B, C, D FIRST FLOOR: • Rector's Office • Faculty of Finance and Accounting SECOND FLOOR: • Faculty of International Relations THIRD FLOOR: • Faculty of Economics FOURTH FLOOR: • Faculty of Informatics and Statistics	
SB	OLD BUILDING
GROUND FLOOR: • Computer Centre 6 Book and Gift Store MEZANIN: 7 Library CIKS FIRST AND SECOND FLOOR: • Classrooms SB THIRD FLOOR: • Classrooms SB • Publishing House Oeconomica FOURTH FLOOR: • Classrooms SB	
RB	RAJSKA BUILDING
FIRST FLOOR: 5 RB 101 Auditorium and Lecture Halls RB 6 SECOND FLOOR: • Classrooms RB THIRD FLOOR: • Faculty of Business Administration • HR Department FOURTH FLOOR: • Faculty of Business Administration, Dean's Office FIFTH FLOOR: • Bursar's Office • International Studies Centre	
IB	ITALSKA BUILDING
FIRST AND SECOND FLOOR: • Canteens THIRD FLOOR: • Department of Science and Research • Sport Centre • Academic Club	

Facilities on campus

- Canteen

Canteen – Menza



Pizza VŠEm



Healthy Food



Facilities on campus

- Other restaurants

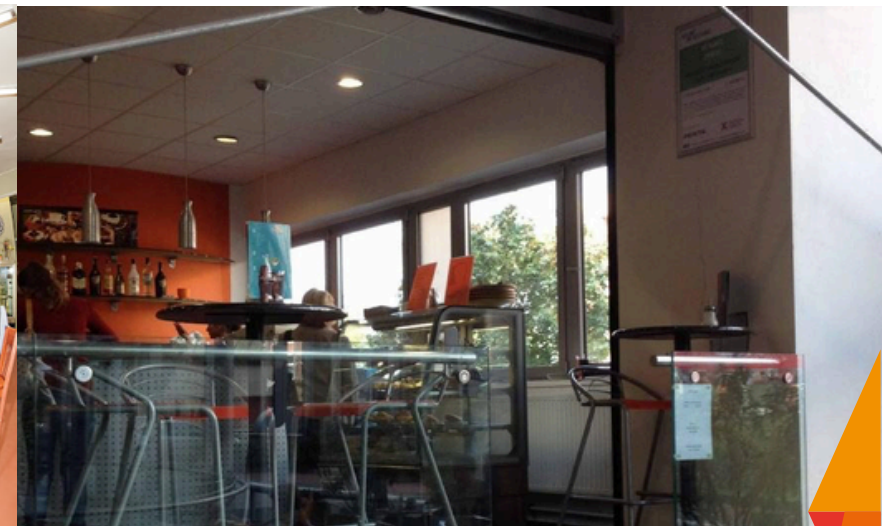
Restaurant Academic Club



Umbrella Pizza Bar



Café Ekonom



Facilities on campus

Library

- Žižkov library and IBB library/ IB library
- 20czk and ISIC for registration
- Place to study, print and copy materials

Bookstore

- Entrance to SB - materials for classes (come early)

Facilities on campus

Coworking space Idea Fair

- Study and meeting place
- Amazing for group projects
- Section for eating lunch, the main area is strictly for study
- Book rooms and tables - min 2 people



STUDY ABROAD

#firvše

Study abroad

- Exchange (Erasmus+ or school support)
- 4th and 5th semester of studies
- More than 250 partner universities
- Important: grade average, languages, buddy programme
- Faculty support (financial and organisational)

APPS

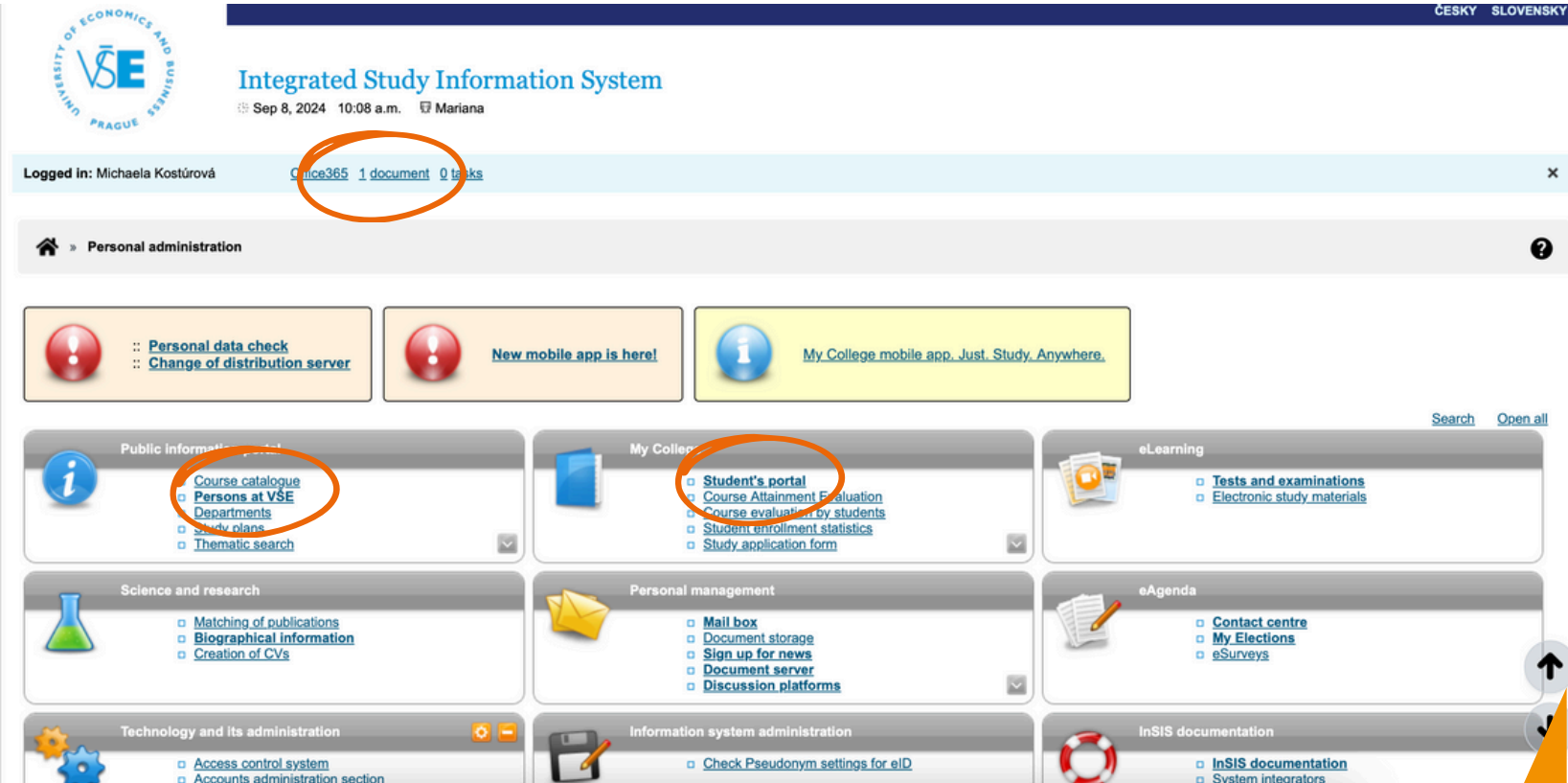
#firvše

Let's look at Insis together



Insis

- everything is in there
- grades, online exams, registration
- order your ISIC, pay for your studies



Integrated Study Information System

Sep 8, 2024 10:08 a.m. Mariana

Logged in: Michaela Kostúrová [College365](#) [1 document](#) [0 tasks](#)

Personal administration

- Personal data check**
[Change of distribution server](#)
- New mobile app is here!**
- My College mobile app...Just. Study. Anywhere.**

Public information

- [Course catalogue](#)
- [Persons at VŠE](#)
- [Departments](#)
- [Study plans](#)
- [Thematic search](#)

My College

- [Student's portal](#)
- [Course Attainment Evaluation](#)
- [Course evaluation by students](#)
- [Student enrollment statistics](#)
- [Study application form](#)

eLearning

- [Tests and examinations](#)
- [Electronic study materials](#)

Science and research

- [Matching of publications](#)
- [Biographical information](#)
- [Creation of CVs](#)

Personal management

- [Mail box](#)
- [Document storage](#)
- [Sign up for news](#)
- [Document server](#)
- [Discussion platforms](#)

eAgenda

- [Contact centre](#)
- [My Elections](#)
- [eSurveys](#)

Technology and its administration

- [Access control system](#)
- [Accounts administration section](#)

Information system administration

- [Check Pseudonym settings for eID](#)

InSIS documentation

- [InSIS documentation](#)
- [System integrators](#)

Student's portal

Study – FMV B-IB pres [term 5, E], study period – WS 2024/2025 - FMV

[My College](#)

[E-study record](#)

[My schoolmates](#)

[Study details](#)

[Map of my study](#)

[Course e-plans](#)

[List of topics](#)

[Coursework submissions](#)

[Plan progress check](#)

[My lectures sheet](#)

[My favourite courses](#)

The table shows the studies commenced or completed at this university and the application icons relevant to the studies. The study and the study period you are working with at the moment can be found in the page subheader. If you have more than one study or study period use the grey bullet in the first column Choose to switch between them in the portal. When entering the Student's portal you are working with the active study (green bullet).

Choose	Faculty	Study	Progress of study	Register for examinations	Registration/Enrollment	Extra-sem. courses	Final thesis
	FMV	International Business full-time	enrolled				

Support of the selected study

Application on support of the selected study.



[Personal timetable](#)



[Academic calendar \(weeks overview\)](#)



[Academic year schedule](#)



[Contact departments](#)



[Contact centre](#)



[My excuse notes](#)



[Print documents](#)



[Document storage](#)



[Course evaluation by students](#)

see what courses you are missing



registration for finals, midterms
course reistration



final thesis: between
3rd - 4th semester

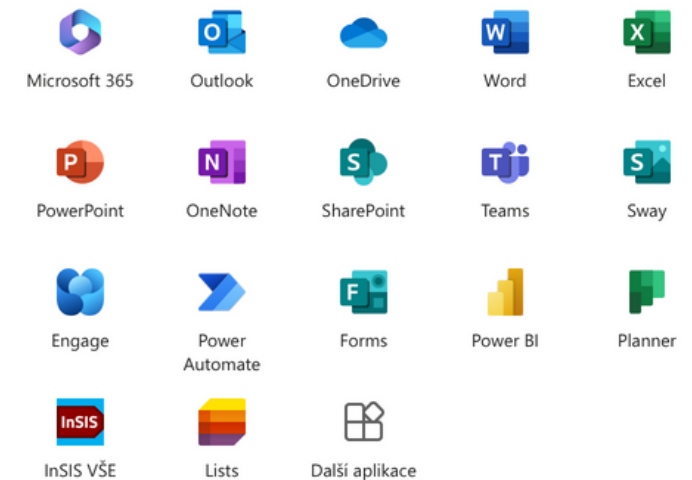


course evaluation



Outlook & Teams

- communication with teachers and other students
- class materials: usually teams, moodle or Insis
- have your notifications on
- download teams email and start using it
- the O365 package:



Moodle

VŠE / VYSOKÁ ŠKOLA EKONOMICKÁ V PRAZE Michaela Kostůrová EN

NAVIGATION

- Dashboard
- My semester overview
- Site pages
- My courses
 - Emergency management - students
 - Základy AI pro studenty
 - PHISH CI
 - Citation
 - Health and safety – Bachelors
 - 2SE152_2022_LS
 - 2SE251_2023_LS
 - 2M0647_2023_LS
 - 2IB101_2022_ZS
 - 2M0252_2023_ZS

Courses

Training courses (5)

Summer semester 2023/2024 (6)

Tiles / Rows

CUSTOMIZE

2SE251 Mezinárodní ekomi...

11F251 Finanční teorie, politi...

2IB255 Retail business - angli...

VŠE / VYSOKÁ ŠKOLA EKONOMICKÁ V PRAZE Michaela Kostůrová EN

NAVIGATION

- Dashboard
- My semester overview
- Site pages
- My courses
 - Emergency management - students
 - Základy AI pro studenty
 - PHISH CI
 - Citation
 - Health and safety – Bachelors
 - 2SE152_2022_LS
 - 2SE251_2023_LS
 - Participants
- Grades
- Announcements
- Course Introduction
- International Trade

2SE251 Mezinárodní ekonomie - anglicky (2023/2024 LS)

Announcements

Course Introduction

International Trade Theories

- class materials, assignments, course requirements

FIR STUDY GUIDE

#firvše



ORIENTATION WEEK

#firvše